



K2[blackpoint]™

Workflow for MOSS & WSS

PRESENTED BY: Hendrik Venter
hendrik@k2.com
021 963 561

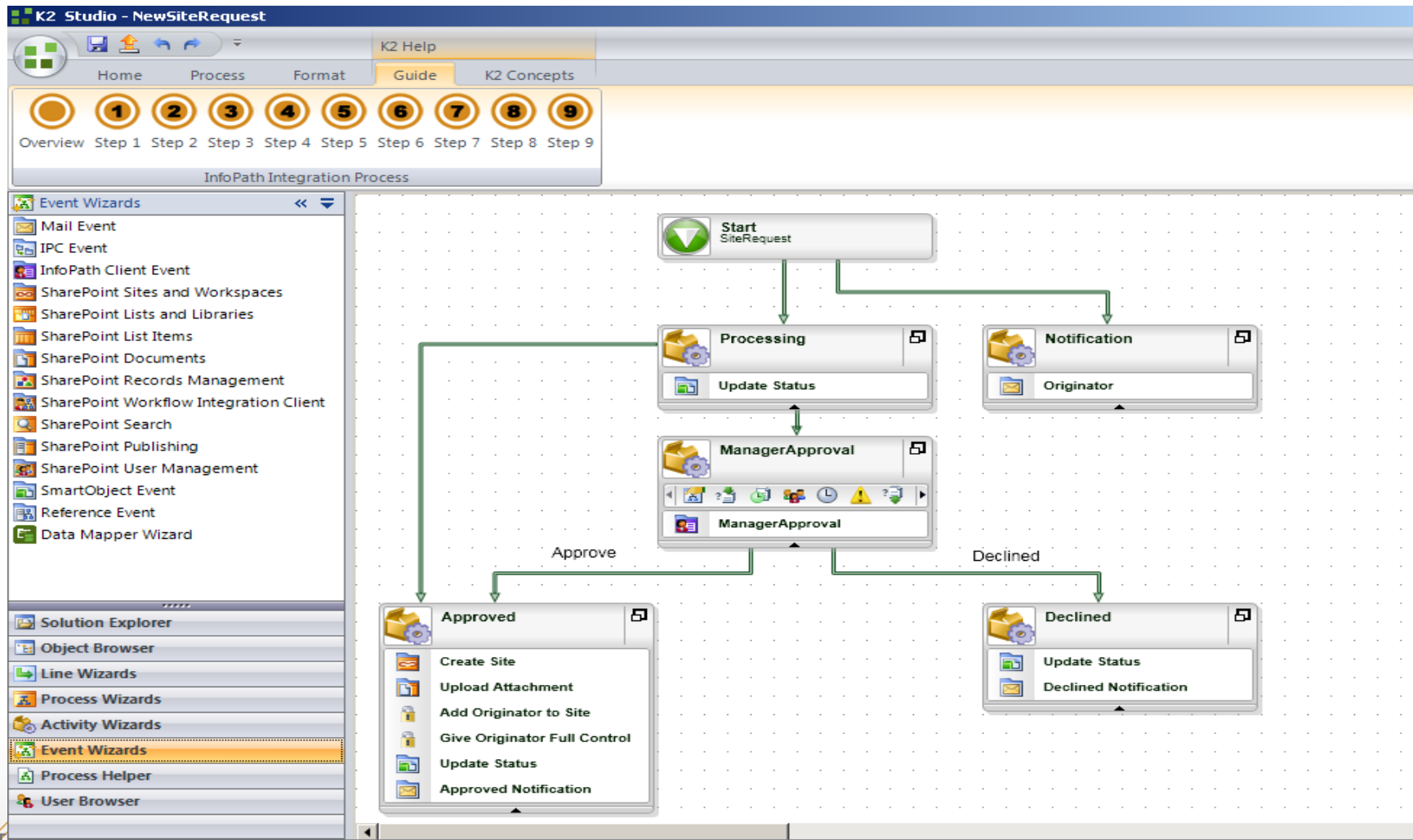
K2[blackpoint][™] SharePoint Usage Categories

- > List based applications
- > Document workflow
- > Enterprise Content Applications – Records management.
- > Web content publishing.
- > MOSS and WSS Infrastructure Management - site provisioning and life cycle management.



K2 BLACKPOINT DESIGNERS

- > Office style Designer - Drag & Drop visual creation of workflow
- > Wizard driven integration with MOSS/WSS



K2 STUDIO DRAG & DROP - WIZARD DRIVEN DESIGN

- Event Wizards
- Mail Event
- IPC Event
- InfoPath Client Event
- SharePoint Sites and Workspaces
- SharePoint Lists and Libraries
- SharePoint List Items
- SharePoint Documents
- SharePoint Records Management
- SharePoint Workflow Integration Client
- SharePoint Search
- SharePoint Publishing
- SharePoint User Management
- SmartObject Event
- Reference Event
- Data Event

SharePoint List Items

Create List Item

SharePoint Site URL: Test

List Name: Browse

Folder: Browse

Content Type: Browse

List Item ID: ...

Add item to this Content Field.

Content Field: Create

Specify settings for the creation of the List Item.

Back

SharePoint List Items

List Item Metadata

+ Assign | X Clear | X Clear All

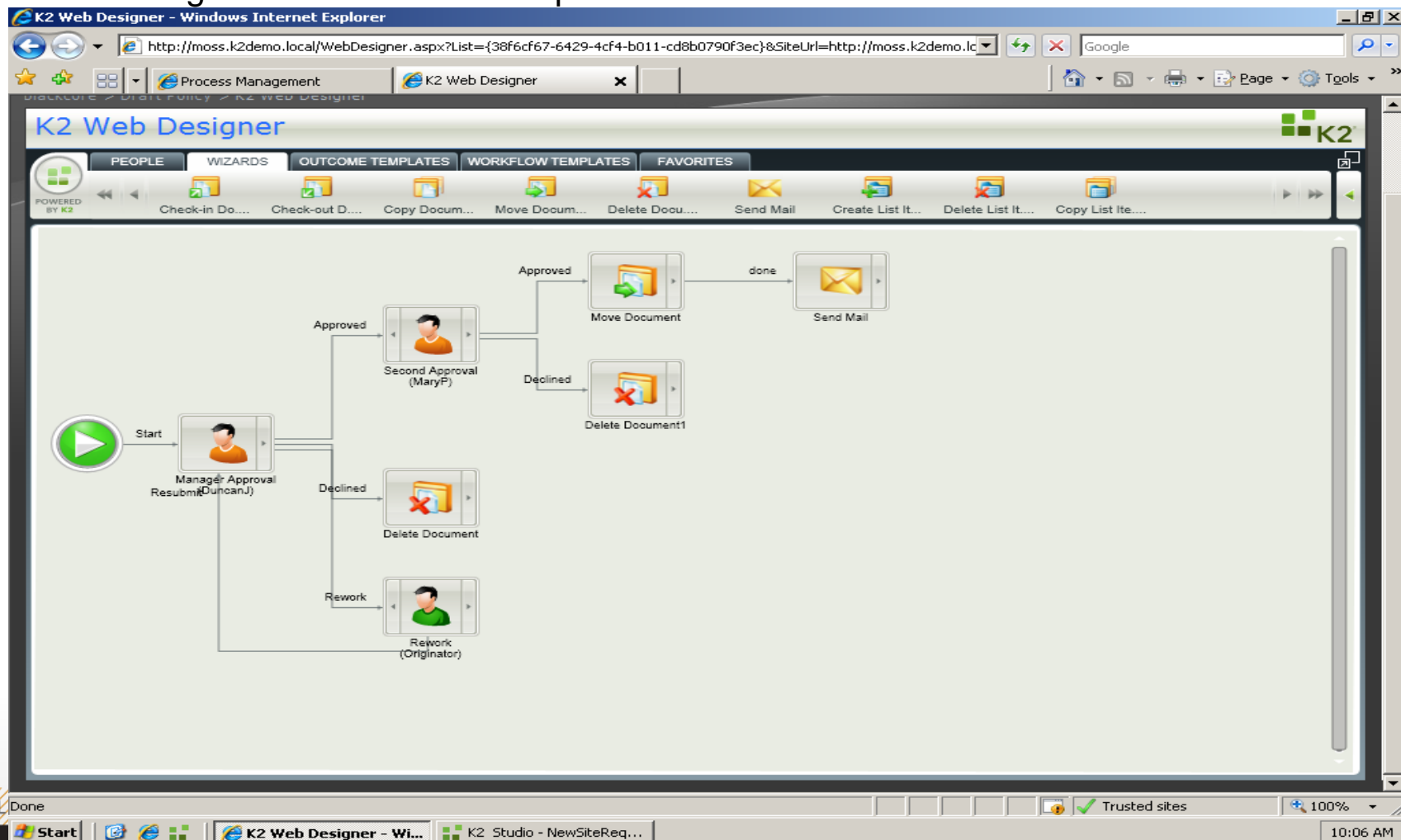
Title	Type	Required	Value
Title	Text	Yes	ProcessStartDate
FirstName	Text		ExpenseRequest11_FirstName
LastName	Text		ExpenseRequest11_LastName
Department	Text		ExpenseRequest11_Department
Email	Text		ExpenseRequest11_Email
TotalExpenses	Text		ExpenseRequest11_Total

Specify metadata values for the list item as specified values or from XML fields in the process.

Back Next Finish Cancel

K2 BLACKPOINT DESIGNERS

- > SilverLight Designer - Web based Drag & Drop creation of workflow
- > Wizard driven integration & Outcome Templates



K2 BLACKPOINT PROCESS PORTALS

blackcore Document Center **K2 Management** News Reports Search Sites Test3 Site

View All Site Content

blackcore > K2 Management

Instance Management

- All
- Running/Active
- Stopped
- Error

Reports

- Activity Statistics
- Process Instances
- Process Statistics
- User Performance
- Process Information

Process Management

- Action Rights
- Error Logs
- Management Worklist
- Roles
- Security
- Versions

Administration

Settings

Recycle Bin

Processes

Last Exported	Export User	Versions	Default Version	Priority	Document View
Process : Equipment\Equipment 11/24/2008 6:47:49 PM	K2:K2DEMO\bpuser	5	5	1	Open
Process : OnlineOrders\OnlineOrders 11/27/2008 5:54:01 PM	K2:K2DEMO\bpuser	1	1	1	Open
Process : MRP\MRPIssues 12/17/2008 6:18:13 PM	K2:K2DEMO\bpuser	6	6	1	Open

Worklist

Selected Filter: Default Quick Search: All

Priority	Folio	Process Name	Activity Name	Status	Original Destination
	006 teched	Equipment	ManagerApproval Activity	Open	K2:K2DEMO\bpuser
	Sev 2 Steam	MRPIssues	IssueStatus Activity	Open	K2:K2DEMO\bpuser

< Previous | Page 1 | Next >

Management Worklist

Folio	Event Name	Activity Name	Item Start Date	Destination User	Status
Process : Equipment\Equipment 006 teched	ManagerApproval	ManagerApproval Activity	11/12/2008 4:45:12 PM	K2:K2DEMO\bpuser	Open
Process : MRP\MRPIssues Sev 2 Steam	IssueStatus	IssueStatus Activity	12/15/2008 12:50:24 AM	K2:K2DEMO\bpuser	Open

Instances Summary

Field	Value
Process : Equipment\Equipment	
Running	1
Stopped	0
Error	0
All	1
Process : OnlineOrders\OnlineOrders	
Running	0
Stopped	0
Error	0
All	0
Process : MRP\MRPIssues	
Running	1
Stopped	0
Error	0
All	1

Unlimited CPU, unlimited sites and collections, both internal and external users

Team Edition: NZ\$10k

Up to 200 users and a single SharePoint server

Standard Edition: NZ\$20k

Over 200 users and a single SharePoint server

Enterprise Edition: NZ\$30k

More than 200 users and distributed SharePoint environments

Annual Maintenance – 17.5%

Price per server, excluding gst

Demo 1:

Expense approval process



InfoPath + Forms Server & K2 Worklist Web part

Manager Review Activity - Approve / Reject / More Info

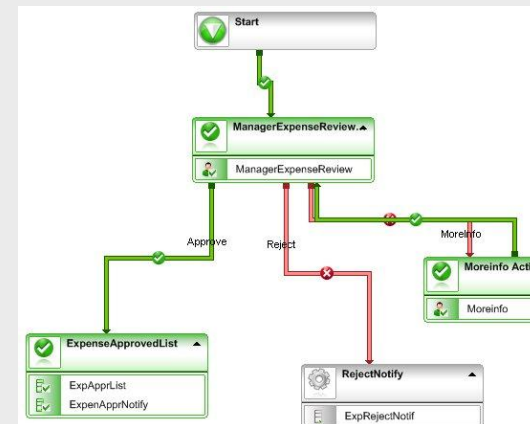
Loop back to previous step

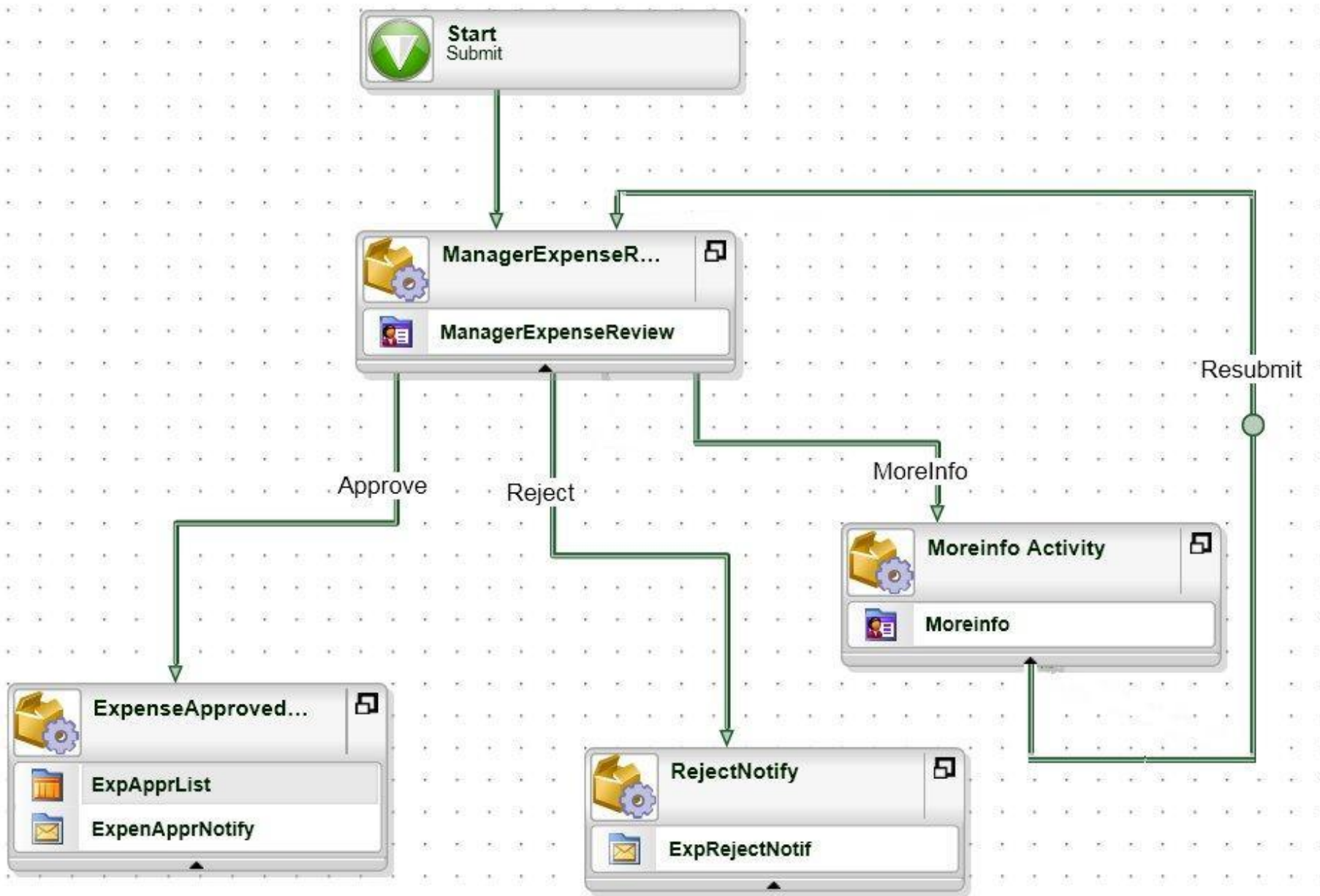
Update Custom List

Escalate

Send Email Notifications

Process Portal reporting & Viewflow -



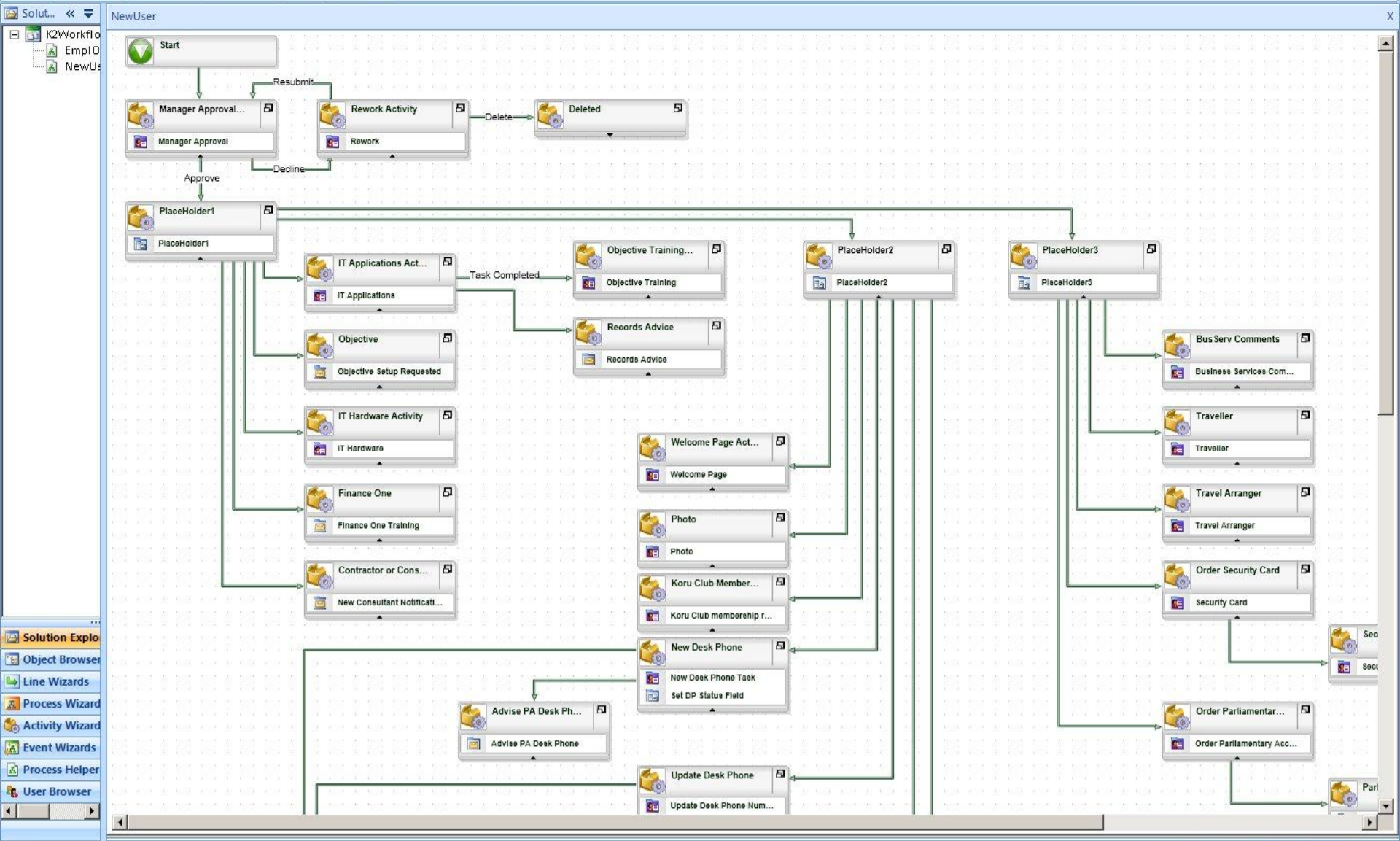


Demo 2 : Building a workflow using the SilverLight designer

Start new workflow when a new item is added to a list

Approve Decline Rework

**That's too easy,
what about a
complex
process?**





www.k2.com

hendrik@k2.com

021963 561

<http://www.youtube.com/k2onk2>

<http://www.k2underground.com/>